



PENNBARRY™

Product Handbook

Our Complete Product Offering

Moving Your Way



Additional PennBarry Product Information:



General & Industrial Product Catalogs

For detailed product information that includes dimensional drawings, performance data, engineering specifications and more, contact your local PennBarry representative to obtain copies of our General and Industrial Product Catalogs.



Selection Software

Make the process of selecting PennBarry ventilation products simple by downloading our selection software. It provides all the tools you need to ensure products are specified correctly for your application, including performance, drawings, options, and accessories.



www.PennBarry.com

By visiting the PennBarry website, you have access to product and engineering information at any time. From frequently asked questions to catalog information, or selection software, you will find it quickly and easily at www.PennBarry.com.



PENNBARRY™

© Copyright 2009 PennBarry. All Rights Reserved.

PennBarry reserves the right to make changes at any time, without notice, to models, construction, options, etc. This Product Handbook illustrates the appearance of PennBarry products at the time of publication. To view the latest updates, visit PennBarry at www.pennbarry.com.

General Ventilation Products

Domex DX.....	2
Fumex FX	2
LC Dynafan LC	2
Linea LF	2
Zephyr Z.....	2
Zephyr Cabinet ZC, ZCC	3
Muffan MU, FS	3
Centrex Inliner SX.....	3
Round Centrex REX	3
Centrex Jr. REXJR.....	3
Breezeway P, BX, BC, BLL, BHM, BHH, BCH	4
Powered Airette AC, AF	4
Domex Axial DAE, DAS	4
Hi-Ex HC, HX, HF, HZ, HS	4
Weather Caps WCC, WCF	4
Gravity Airette AEG	5
Pennhouse PH.....	5
Gravity Ventilators PT, HPA, PA.....	5

Industrial Ventilation Products

Omnivent OV	5
Dynamo D	5
Free Standing Centrifugal VCR	6
Industracon IND	6
Tubular Centrifugal TUB	6
Mixed Flow ESI	6
Plenum/Plug ESP, VSP.....	6
Wall Propeller Fans PND, PNB, MBP.....	7
Hooded Roof Fans HRD, HRB, HRR, HTB	7
Upblast Roof Fans ULD, ULB, UTD, UTB	7
Recirculating Roof Fans UDR, UBR, HDR, HBR.....	7
Tubeaxial TXD, TXB	7
Vaneaxial VXD, VXB.....	8
Bifurcator SSB, TSB, AXD, AXB	8
Fume Exhaust FH, FHL	8
Hyblast HY	8

Energy Recovery Products

Energy Recovery Products ERV.....	8
-------------------------------------	---

General Ventilation Products



Domex | DX

- Roof-Mount, Spun Aluminum Downblast
- Direct or Belt Drive
- Application: General Exhaust for Schools, Churches, and Office Buildings
- Miami-Dade Approved for High Velocity Hurricane Zones (NOA# 08-1202.13)
- Capacity: From 44 - 46,640 cfm; 0 - 1.5" w.g.



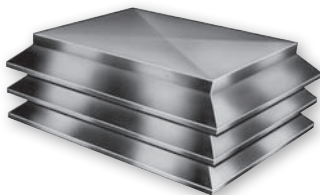
Fumex | FX

- Roof-Mount, Spun Aluminum Upblast; Direct or Belt Drive
- Application: Fumes, Commercial Kitchens, and Exhaust of Other Contaminants
- U.L. Rated for Smoke Control Systems (500°F / 4-Hours; 1000°F / 1-Hour)
- U.L. 762 Rated for Grease Laden Air Exhaust
- Miami-Dade Approved for High Velocity Hurricane Zones (NOA# 08-1202.13)
- Capacity: From 54 - 30,609 cfm; 0 - 4.7" w.g.



LC Dynafan | LC

- Roof-Mount, Low Contour Downblast
- Direct or Belt Drive
- Application: General Exhaust for Schools, Churches, and Office Buildings
- Capacity: From 39 - 17,516 cfm; 0 - 1.5" w.g.



Linea | LF

- Roof-Mount, Low Contour Downblast
- Architectural, Tiered Hood Design
- Direct or Belt Drive
- Application: General Exhaust for Schools, Churches, and Office Buildings.
- Capacity: From 32 - 18,907 cfm; 0 - 1.5" w.g.



Zephyr | Z

- Ceiling or Inline Mount
- Low Sound Levels
- Direct Drive
- Application: General Exhaust for Lavatories, Conference Rooms, and Institutions
- U.L. Rated for Use Over Bath Tubs and Showers When Connected to a GFCI Protected Branch Circuit
- Capacity: From 32 - 3,290 cfm; 0 - 1.5" w.g.

Zephyr Cabinet | ZC, ZCC

- Inline Duct-Mount
- Belt Drive
- Application: General Purpose Duct Blower for Heating/Cooling Systems
- ZC (Single) Capacity: From 750 - 6,350 cfm; 0 - 1.5" w.g.
- ZCC (Twin) Capacity: From 1,500 - 12,700 cfm; 0 - 1.5" w.g.



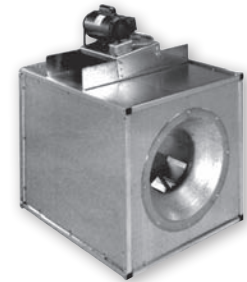
Muffan | MU, FS

- Roof-Mount Filtered Supply
- Direct or Belt Drive
- Side Intake (FS Model)
- Application: Supply Fresh Air to Buildings or Systems by Replacing the Exhaust of Contaminated Air (e.g. Commercial Kitchens)
- Capacity: From 100 - 14,426 cfm; 0 - 1.0" w.g.



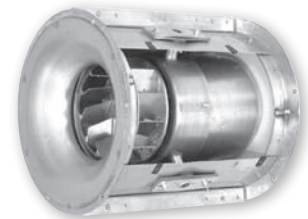
Centrex Inliner | SX

- Square Inline Duct-Mount
- Direct or Belt Drive
- Application: Supply, Return, or Exhaust Air for General HVAC Systems
- Inlet Filter Box with 1" or 2" Filters
- Capacity: From 103 - 27,502 cfm; 0 - 3.5" w.g.



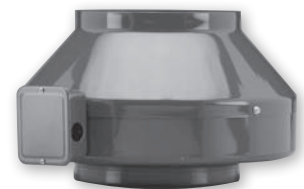
Round Centrex | REX

- Tubular Inline Duct-Mount
- Aluminum Construction
- Direct or Belt Drive
- Application: Supply or Return Air; Exhaust Fumes or Humid Air
- Capacity: From 75 - 22,054 cfm; 0 - 3.0" w.g.

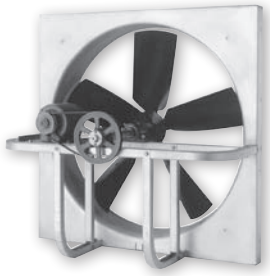


Centrex Jr. | REXJR

- Inline Duct-Mount
- Direct Drive
- Application: Dryer Booster and Humid Air Exhaust Systems
- Capacity: From 42 - 711 cfm; 0 - 1.5" w.g.

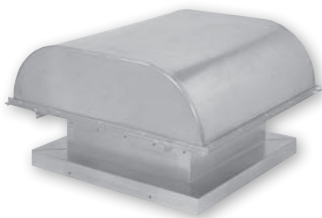


General Ventilation Products



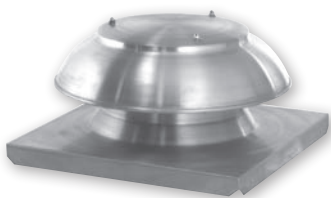
Breezeway | P, BX, BC, BLL, BHM, BHH, BCH

- Wall-Mount Propeller Fans
- Direct or Belt Drive
- Application: General Supply and Exhaust for Warehouses, Factories, and Mechanical Rooms
- Capacity: Up to 68,172 cfm; 0 - 1.8" w.g.



Powered Airette | AC, AF

- Hooded, Roof-Mount Propeller Fans
- Direct or Belt Drive
- Application: Supply Fresh Air or Exhaust Hot, Humid, and/or Foul Air
- Capacity: Up to 72,755 cfm; 0 - 0.5" w.g.



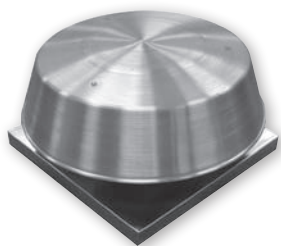
Domex Axial | DAE, DAS

- Roof-Mount, Low Contour Propeller Downblast
- Application: General Exhaust or Supply for Low Pressure Systems
- Capacity: Up to 2460 cfm; 0 - 1.25" w.g.



Hi-Ex | HC, HX, HF, HZ, HS

- Roof-Mount Propeller Upblast
- Direct or Belt Drive
- Standard Height or Low Profile
- Application: Rapid Air Removal or General Ventilation Exhaust
- U.L. Rated for Smoke Control Systems (500°F / 4-Hours; 1000°F / 15-Minutes)
- Capacity: Up to 82,481 cfm; 0 - 1.0" w.g.



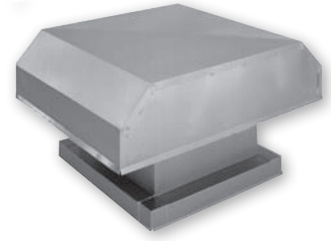
Weather Caps | WCC, WCF

- Low Silhouette, Spun Aluminum Design
- Application: Pressure Relief, Discharge Cap, Outside Air Inlet Hood
- Capacity: Up to 20,065 cfm

General & Industrial Ventilation Products

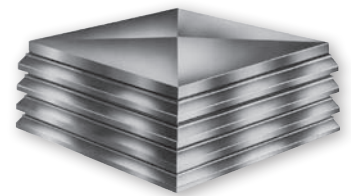
Gravity Airette | AEG

- Hooded Roof Gravity Ventilators
- Galvanized or Aluminum Construction
- Application: Building Pressure Relief and Fresh Air Intake
- Capacity Range: Up to 72,000 cfm



Pennhouse | PH

- Roof-Mount Architectural Tiered Hood Design
- Gravity Air Intake or Relief
- Application: Building Pressure Relief and Fresh Air Intake
- Compatible with Linea Centrifugal Exhausters



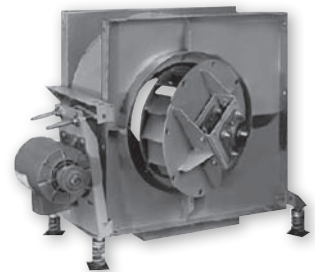
Gravity Ventilators | PT, HPA, PA

- Turbine: General Ventilation of Factories, Farm/Agricultural Buildings, Commercial/Public Structures, and Homes
- Pul-Air: Air Exhaust with No Moving Parts
- Insul-Air: Extended Airshaft to Clear Roof Peaks, etc.



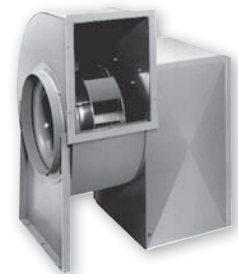
Omnivent | OV

- Ceiling-Mount or Interior/Exterior Wall-Mount Fan
- Heavy-Gauge Steel
- Belt Drive
- Application: General Exhaust or Supply Requiring Unique Mounting of Fan
- Capacity: From 400 - 30,400 cfm; 0 - 7.0" w.g.

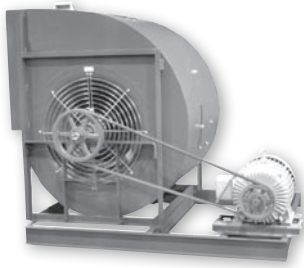


Dynamo | D

- Class I Heavy-Gauge Galvanized Steel, Roof/Floor/Inline Mount Utility Blower
- Belt Drive; Backward Inclined Wheel
- Application: Commercial Kitchen and Fume Exhaust, Building Pressurization and Fresh Air Supply
- U.L. 762 Rated for Grease Laden Air Exhaust
- Capacity: From 500 - 29,150 cfm; 0 - 5.0" w.g.

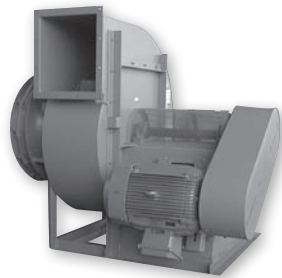


Industrial Ventilation Products



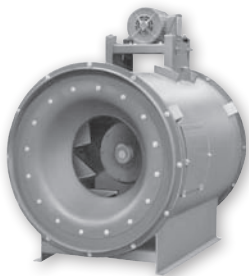
VCR

- Class I, II, III, IV Construction, Free Standing SWSI/DWDI Centrifugal Fan
- Belt Drive
- Backward Inclined and Airfoil Wheels
- Application: Exhaust and Supply in Typical Duct Systems; Able to Handle Many Special Environments such as High Temperature, Corrosive, and Spark Resistant
- Capacity: Up to 264,000 cfm; 0 - 10.0" w.g.



Industracon | IND

- Heavy-Duty, High Pressure Construction, Free Standing SWSI Industrial Fan
- Belt Drive
- 3 Wheel Types: General, Fibrous Material Handling, and Air Handling
- Application: Ventilation or Exhaust of Dust, Granular Materials, and Fibrous Materials as well as Air Handling
- Capacity: Up to 60,000 cfm; 0 - 30.0" w.g.



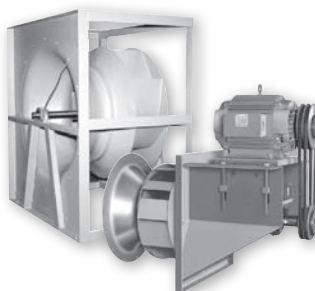
TUB

- Class I, II, III Heavy-Gauge Steel Construction, Tubular Centrifugal Inline Fan
- Belt Drive
- Backward Inclined and Airfoil Wheels
- Horizontal or Vertical Mount
- Application: Exhaust, Supply, or Return Air in Ducted (Medium to High) Pressure Systems
- Capacity: From 49 - 46,640 cfm; 0 - 10" w.g.



ESI

- Class I, II Heavy-Gauge Steel, Mixed Flow Inline Fan
- Belt Drive; Patented Wheel Design
- Application: Exhaust, Supply, or Return Air in Ducted (Medium to High) Pressure Systems Requiring Lower Sound Levels
- U.L. Rated for Grease Laden Air (300°F & 500°F)
- U.L. Rated for Smoke Control Systems (500°F / 4-Hours)
- Capacity: From 1,300 - 155,000 cfm; 0 - 7.0" w.g.



Plenum/Plug | ESP, VSP

- Class I, II, III Heavy-Gauge Steel Construction, Unhoused Centrifugal
- Belt Drive
- High Efficiency Airfoil and Backward Inclined Wheels (Plenum is Airfoil Only)
- Application: Supply Air in a Pressurized Plenum for Built-up Air Handling System; Excellent for Retrofit or Replacement Systems
- Capacity: Up to 264,000 cfm; 0 - 10.0" w.g.

Wall Propeller Fans | PND, PNB, MBP

- Heavy-Duty Construction, Wall-Mount Propeller Fans
- Direct or Belt Drive
- Application: Supply/Exhaust for Warehouses, Factories, and Mechanical Rooms
- Capacity: Up to 323,000 cfm; 0 - 1.8" w.g.



Hooded Roof Fans | HRD, HRB, HRR, HTB

- Heavy-Duty Construction, Hooded Roof-Mount Propeller Fans
- Direct or Belt Drive
- Application: Supply Fresh Air or Exhaust Hot, Humid, and/or Foul Air
- Capacity: Up to 72,755 cfm; 0 - 0.5" w.g.



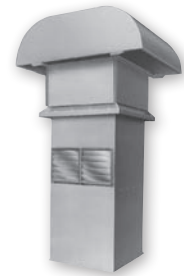
Uplblast Roof Fans | ULD, ULB, UTD, UTB

- Heavy-Duty Construction, Roof-Mount Propeller Uplblast
- Direct or Belt Drive
- Standard Height or Low Profile
- Application: Rapid Air Removal, High Temperature, or General Ventilation Exhaust
- Capacity: Up to 82,481 cfm; 0 - 1.0" w.g.



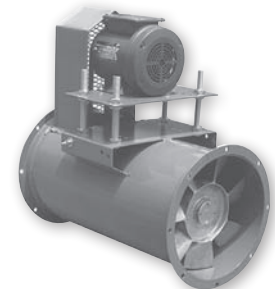
Recirculating Roof Fans | UDR, UBR, HDR, HBR

- Heavy-Duty Construction, Hooded Roof-Mount Recirculating Propeller Fans
- Direct or Belt Drive
- Application: Supply Fresh Air, Exhaust Hot, Humid, and/or Foul Air; Recirculate Cool/Warm Air to Decrease Cooling/Heating Costs
- Capacity: Up to 76,945 cfm; 0 - 0.5" w.g.



Tubeaxial | TXD, TXB

- Low to Medium Pressure Ducted Applications
- Direct or Belt Drive
- Horizontal or Vertical Mount
- Application: Exhaust Contaminated/Hot Air and Supply Air to Cool/Pressurized Interior Spaces
- Capacity: Up to 150,000 cfm; 0 - 2.5" w.g.



Industrial Ventilation & Energy Recovery Products



Vaneaxial | VXD, VXB

- High Pressure Ducted Applications
- Direct or Belt Drive; Horizontal or Vertical Mount
- Application: Exhaust Contaminated/Hot Air and Supply Air to Cool/Pressurized Interior Spaces
- U.L. Rated for Smoke Control Systems (500°F / 4-Hours; 1000°F / 15-Minutes - VXD Only)
- Capacity: Up to 120,000 cfm; 0 - 7.0" w.g.



Bifurcator | SSB, TSB, AXD, AXB

- Vertical Roof or Inline-Mount
- Single or Two Stage; Axial or Axcentrix; Direct or Belt Drive
- Heavy Gauge Steel and Continuous Welding
- Application: Food Processing, Glass, Breweries, Chemical Plants, Pulp, Paper, Meat Packing, Hot Metal, Rubber, Dairy
- Capacity: From 750 - 86,000 cfm; 0 - 3.0" w.g.



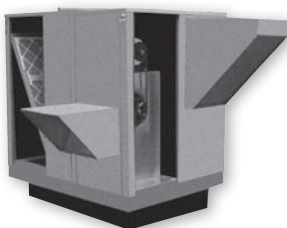
Fume Exhaust | FH, FHL

- Roof-Mount Upblast
- Belt Drive
- Application: Laboratories, Hospitals, Research Centers, and Institutions
- Capacity: From 350 - 80,000 cfm; 0 - 8.0" w.g.



Hyblast | HY

- Roof-Mount Upblast
- Plenum Mounting of Multiple Fans; Redundant Fan System
- Belt or Direct Drive
- Application: High Velocity Fume Exhaust of Laboratories, Hospitals, Research Centers, and Institutions
- Capacity: From 2,850 - 54,960 cfm; 0 - 8.5" w.g.



Energy Recovery Products | ERV

- Stand-alone Energy Recovery Units
- Application: Recover Exhaust Air Energy and Reintroduce it into Conditioned Space
- 5 Configurations: D-Series - Rooftop Downward Discharge Duct Arrangement; S-Series - Rooftop Side-by-Side Duct Arrangement; O-Series - Rooftop Over-and-Under Duct Arrangement; M-Series - Mechanical Room Side-by-Side Duct Arrangement; N-Series - Mechanical Room Over-and-Under Duct Arrangement
- ARI Certified Energy Recovery Wheel
- Capacity: Up to 6,200 cfm, 0 - 1.5" w.g.

PennBarry Product Solutions:



PennBarry is proud to be your preferred manufacturer of commercial and industrial fans and blowers. To learn more about how PennBarry products can assist you in your next application, simply contact your nearest PennBarry representative or visit us on the web at www.pennbarry.com.

Provided by:

General Products

Roof and Wall Exhaust Centrifugal Fans
Ceiling, Wall, and Inline Centrifugal Fans
Roof Supply Centrifugal Fans
Square and Round Centrifugal Fans
Wall Mounted Axial Fans
Hooded Roof Axial Fans
Upblast Roof Axial Fans
Gravity Ventilators
Roof Curbs

Industrial Products

Utility Vent Sets
Freestanding Centrifugal Fans
Industrial & Material Handling Fans
Tubular Centrifugal Inline Fans
Mixed Flow Centrifugal Fans
Plug & Plenum Fans
Wall Mounted Propeller Fans
Tubaxial Fans
Vaneaxial Fans
Bifurcator Fans
Fume Exhaust Fans

Energy Recovery Products

Outdoor Units
Indoor Units



PENN BARRY™

Moving Your Way

PennBarry | Manufacturer of Ventilation Products | www.pennbarry.com
1401 N. Plano Rd.; Richardson, TX 75081 :: Tel: 972.234.3202 :: Fax: 972.497.0468 :: pennbarrysales@pennbarry.com

© Copyright 2009 PennBarry